

PRODUCT INFORMATION PACKET



Model No: C4D18FK3A

Catalog No: 109103.00

1 1/2HP.1800RPM.WMS56CZ.TEFC.24V.CONT.40C.1.0SF.RIGID C.DC NEMA LOW
VOLTAGE.C4D18FK3A

Low Voltage



Regal and Leeson are trademarks of Regal Beloit Corporation or one of its affiliated companies.

©2018 Regal Beloit Corporation, All Rights Reserved. MC017097E





Nameplate Specifications

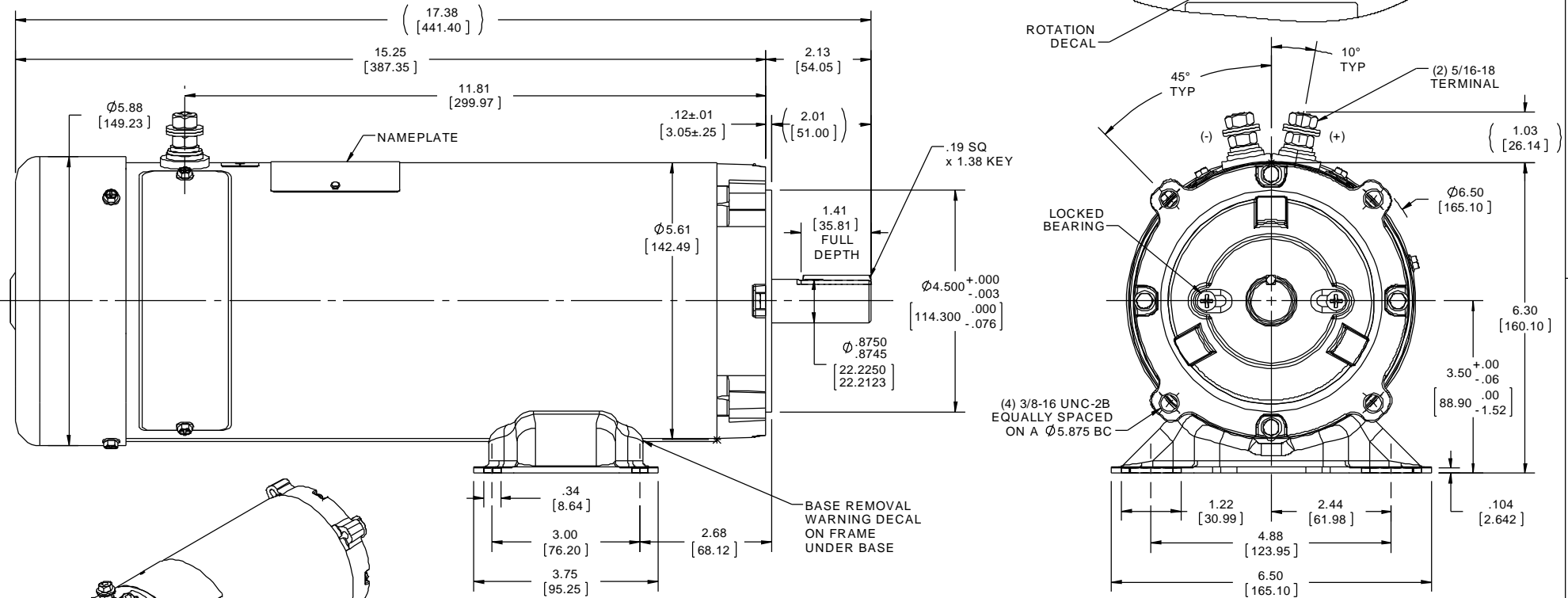
Output HP	1.50 Hp	Output KW	1.1 kW
Voltage	24 V	Current	60.0 A
Speed	1800 rpm	Service Factor	1
Efficiency	77.5 %	Duty	Continuous
Insulation Class	H	Frame	WMS56CZ
Enclosure	Totally Enclosed Fan Cooled	Overload Protector	No
Ambient Temperature	40 °C	Drive End Bearing Size	6205
Opp Drive End Bearing Size	6203	UL	Recognized
CSA	Y	CE	N

Technical Specifications

Rotation	Reversible	Mounting	Rigid C base
Overall Length	17.38 in	Frame Length	12.00 in
Shaft Diameter	0.875 in	Shaft Extension	2.13 in
Outline Drawing	031817		

This is an uncontrolled document once printed or downloaded and is subject to change without notice. Date Created: 10/15/2018

- NOTES:
 1) MAXIMUM FACE RUNOUT .004 T.I.R.
 2) MAXIMUM PILOT ECCENTRICITY .004 T.I.R.
 3) PERMISSIBLE SHAFT RUNOUT .002 T.I.R.
 4) GASKETS THROUGHOUT.



DRAWING REVISION 01	REVISION BY L GUERRA	DATE 11/1/13	TOLERANCES UNLESS OTHERWISE SPECIFIED:			DRAWN BY L GUERRA	Regal Beloit America, Inc.
ECO	APPROVED BY	DATE	DEC.	INCH	mm	ANGLE	
ECO DESCRIPTION ADDED EXTRA VIEW PER MFG REQUEST			.X	±0.1	[±2.5]	±0.5°	APPROVED BY
COPYRIGHT REGAL BELOIT AMERICA, INC. ALL RIGHTS RESERVED. PROPRIETARY AND CONFIDENTIAL INFORMATION. THIS DOCUMENT IS THE PROPERTY OF REGAL BELOIT AMERICA, INC. (OWNER) AND CONTAINS OWNER'S PROPRIETARY INFORMATION. ANY PERSON, CORPORATION OR OTHER FIRM RECEIVING IT IS DEEMED, BY RECEIVING IT, TO AGREE THAT IT, AND/OR ANY PART OF IT, SHALL NOT BE DISCLOSED TO ANY PERSON, CORPORATION OR OTHER ENTITY, DUPLICATED, AND/OR USED, EXCEPT AS EXPRESSLY APPROVED IN WRITING IN ADVANCE BY OWNER. THIS DOCUMENT SHALL BE RETURNED TO OWNER UPON REQUEST. IT MAY BE SUBJECT TO CERTAIN RESTRICTIONS UNDER APPLICABLE EXPORT CONTROL LAWS AND REGULATIONS.			.XX	±0.03	[±0.76]		DATE
			.XXX	±0.005	[±0.127]		DESCRIPTION MODEL-DC 48 FRAME
			.XXX	+0.0005	[+0.0127]		MATERIAL
			REMOVE BURRS & BREAK SHARP EDGES: .003/.015 [0.076/.381] CORNER FILLETS: .02 [51] MACHINED SURFACES: .125/3.2 INCH/mm			PROCESS/FINISH	DRAWING NUMBER 031817
			mm SHOWN IN [BRACKETS]			THIRD ANGLE PROJECTION	SHEET 1 OF 1